



1/2 Support Tray
VPL501L (left)
VPL502R (right)

1/2 SUPPORT TRAY OFFERS OPTIMUM ADJUSTABILITY AND STABILITY FOR POSITIONING NEEDS.

Unique Universal Mounting Plate allows for:

- easy installation to most manual or power wheelchairs.
- forward/rearward adjustability to accommodate torso or change in positioning needs.
- height adjustability to accommodate a variety of arm pads.
- Removable or easily flipped 270° out of the way for the client to transfer in and out of the wheelchair
- Accommodates lateral support and/or elbow stop

Premium stretch vinyl covering and 1" foam padding provides comfort and support



Flip Over



Removable



Custom 1/2 Tray



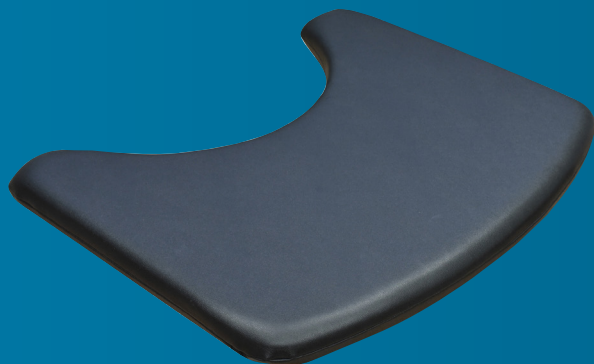
Universal Mounting Plate – UMP100

Provides a unique mounting platform for lateral support, cup holders, phones, tablets....

- Mounts underneath arm pad



Cup Holder



**FULL PADDED SUPPORT TRAY PROVIDES
ADDITIONAL SUPPORT AND POSITIONING
WHILE KEEPING ITEMS WITHIN EASY REACH.**

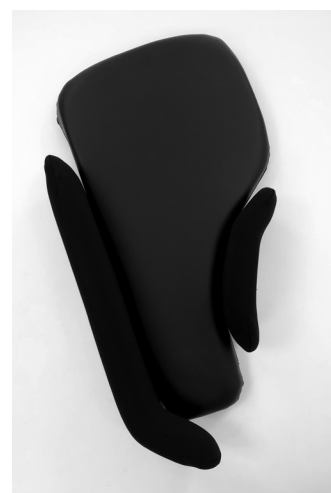
- Premium stretch vinyl covering and 1" foam provide comfort and support.
- Slide on, adjustable aluminum rails allow for easy mounting to most wheelchairs.
- T-nuts in place for easy mounting of accessories.
- Custom sizes, shapes, joy stick cut outs available



FULL TRAY W ACCESSORIES



ACCESSORIES



**½ TRAY
W ACCESSORIES**

**ELBOW STOPS AND LATERAL SUPPORTS INCREASES GOOD ARM AND
BODY POSITIONING**

- Now in aluminum, lightweight, more durable, less chance of cracking or breaking.
- Padded with removable stretch cover.